

SW45B Wirewound Potentiometer -1.614" dia.



For more information about this product, visit our website at: www.potentiometers.com



Series SW45B potentiometers feature Wirewound elements and gold plated terminals

Features

- Wirewound resistive element
- Anodized Aluminum housing
- Stainless steel shaft
- Gold plated terminals

Electrical Specifications

Resistance Range: 50 to 50K ohms standard
Resistance Tolerance: $\pm 3\%$
Independent Linearity: $\pm 0.5\%$
Electrical Rotation: $330^\circ \pm 2^\circ$
Power Rating: 1 watt
Insulation Resistance: 1000 Megohms @ 500VDC
Dielectric Strength: 1000 VAC

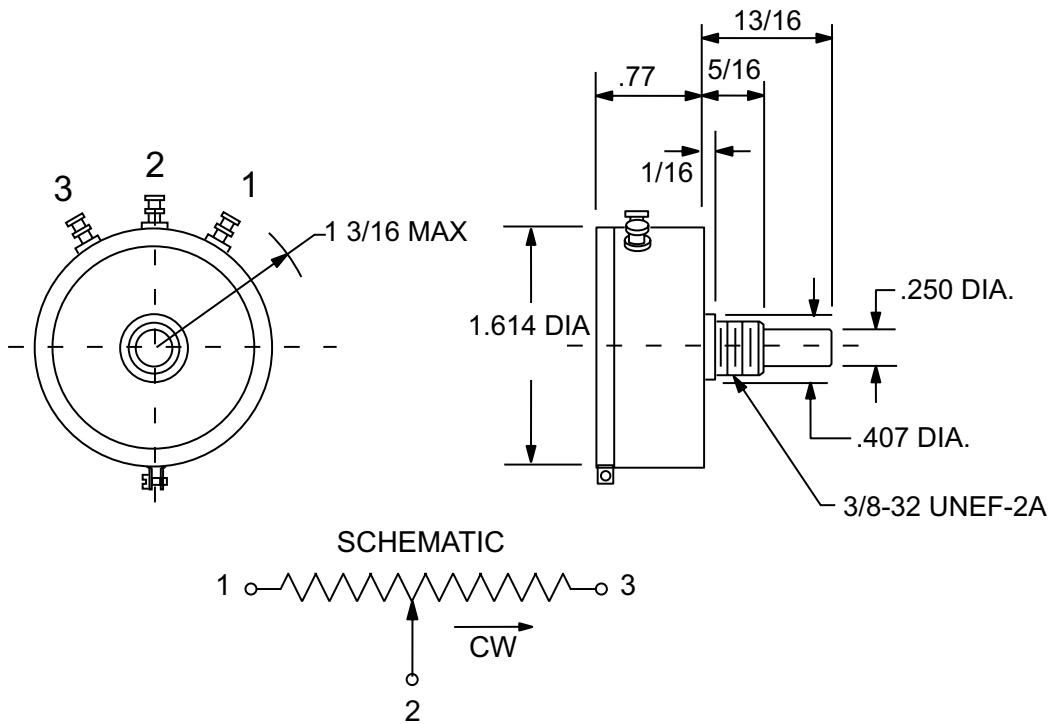
Mechanical Specifications

Mechanical Rotation: $330^\circ +10^\circ -0^\circ$
Torque: 0.5 oz. in. Max
Weight: Approx. 3.5 oz.
Rotational Life: 1,000,000 Turns rated

Environmental Specifications

Operating Temperature: -55°C to $+105^\circ\text{C}$
Vibration: 10HZ to 2000HZ 15G
Shock: 50G
Moisture Resistance: 40°C 95%RH 240 Hours

SW45B Wirewound Potentiometer - 1.614" dia.



Ordering Information

Example Part Number: **SW45B-10K-CT**

SW45B	10K	CT
Model	Resistance	Options
SW45B	10 = 10 ohms 20 = 20 ohms 50 = 50 ohms 100 = 100 ohms 200 = 200 ohms 500 = 500 ohms 1K = 1K ohms 2K = 2K ohms 5K = 5K ohms 10K = 10K ohms 20K = 20K ohms 50K = 50K ohms	CT = Center Tap SB = Sealed Body FL = Flatted Shaft NS = No Stops SL = Side Load Treatment S = Servo Mount with ball bearings

For more information about this product, visit our website at: www.potentiometers.com

