

# SP40B Conductive Plastic Potentiometer



For more information about this product, visit our website at: [www.potentiometers.com](http://www.potentiometers.com)



***Series SP40B potentiometers feature  
Conductive Plastic elements and gold plated terminals***

## Features

- Conductive Plastic resistive element
- Anodized Aluminum housing
- Stainless steel shaft
- Gold plated terminals

## Electrical Specifications

Resistance Range: 1K to 100K ohms standard  
Resistance Tolerance:  $\pm 10\%$   
Independent Linearity:  $\pm 1\%$   
Resolution: Essentially Infinite  
Electrical Rotation:  $320^\circ \pm 5^\circ$   
Power Rating: 2 watts  
Insulation Resistance: 1000 Megohms @ 500VDC  
Dielectric Strength: 1000 VAC  
Contact Resistance Variation: Less than 2% C.R.V  
Output Smoothness: Less than 0.1%

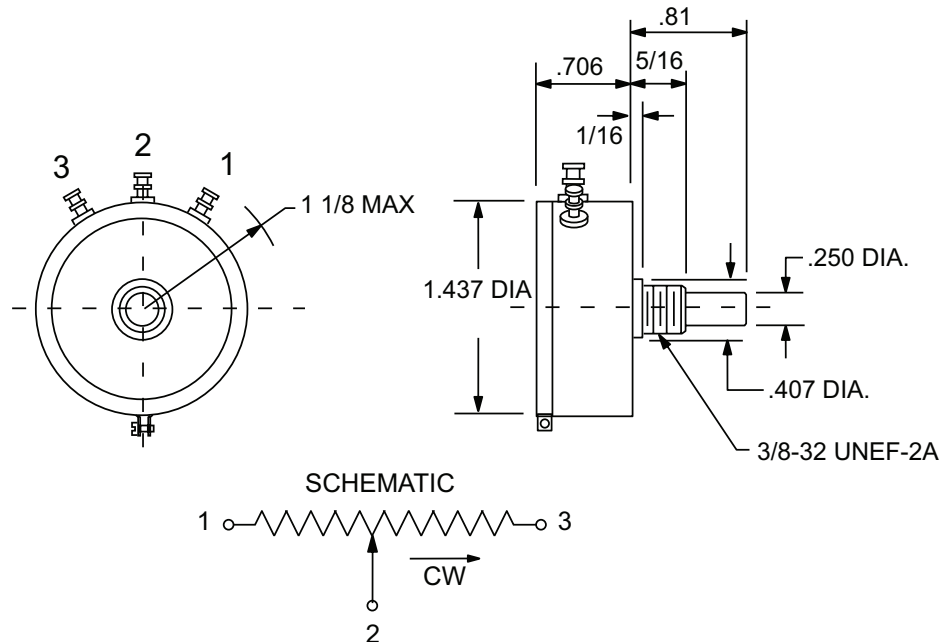
## Mechanical Specifications

Mechanical Rotation:  $320^\circ +10^\circ -0^\circ$   
Torque: 0.5 oz. in. Max  
Weight: 1 oz.  
Rotational Life: 50,000,000 Turns rated

## Environmental Specifications

Operating Temperature:  $-55^\circ\text{C}$  to  $+125^\circ\text{C}$   
Temperature Coefficient:  $\pm 400$  PPM/ $^\circ\text{C}$   
Vibration: 10HZ to 2000HZ 15G  
Shock: 50G  
Moisture Resistance:  $40^\circ\text{C}$  95%RH 120 Hours

# SP40B Conductive Plastic Potentiometer



## Ordering Information

Example Part Number: **SP40B-10K-CT**

SP40B	10K	CT
<b>Model</b>	<b>Resistance</b>	<b>Options</b>
SP40B	1K = 1K ohms 2K = 2K ohms 5K = 5K ohms 10K = 10K ohms 20K = 20K ohms 50K = 50K ohms 100K = 100K ohms	CT = Center Tap SB = Sealed Body FL = Flatted Shaft NS = No Stops SL = Side Load Treatment S = Servo Mount with ball bearings

For more information about this product, visit our website at: [www.potentiometers.com](http://www.potentiometers.com)



© State Electronics

36 State Route 10, STE 6 • East Hanover, NJ 07936-0436  
 973-887-2550 • Toll Free 1-800-631-8083 • Fax 973-887-1940  
<http://www.potentiometers.com>