

LCP12Y Conductive Plastic Linear Potentiometer with Spherical Ball Bearings



For more information about this product, visit our website at:
www.potentiometers.com

***Series LCP12Y linear potentiometers feature Conductive Plastic Elements
Spherical nylon ball bearings allow mounting flexibility***

Features

- Conductive Plastic resistive element
- Spherical Nylon Ball bearings
- Stroke Length: 1/2", 1", 2', 3", 4"
- Aluminum black anodized case, plastic lid
- Stainless steel shaft - threaded or plain
- Gold plated brass terminals

Electrical Specifications

Resistance Range: 500 to 20K ohms standard

Resistance Tolerance: $\pm 20\%$

Insulation Resistance: 1,000 Megohms @ 500VDC

Dielectric Strength: 500 VAC min.

Linearity:

LCP12Y-12: $\pm 1.5\%$

LCP12Y-25: $\pm 1.0\%$

LCP12Y-50: $\pm 0.7\%$

LCP12Y-100: $\pm 0.5\%$

Power Rating:

LCP12Y-12: 0.2 watt

LCP12Y-25: 0.4 watt

LCP12Y-50: 0.7 watt

LCP12Y-100: 1.2 watt

Mechanical Specifications

Stroke Length: 1/2", 1", 2', 3", 4"

Shaft: Stainless steel

Friction: 3.6 oz

Weight: 10 to 35 grams

Life Expectancy: 20,000,000 strokes

Environmental Specifications

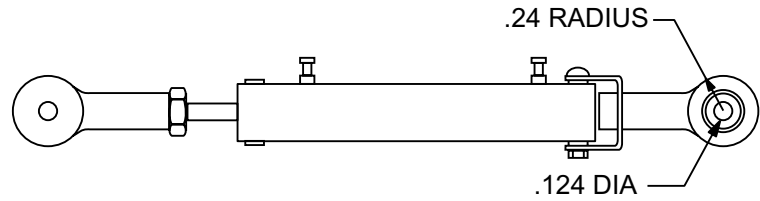
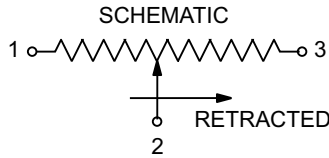
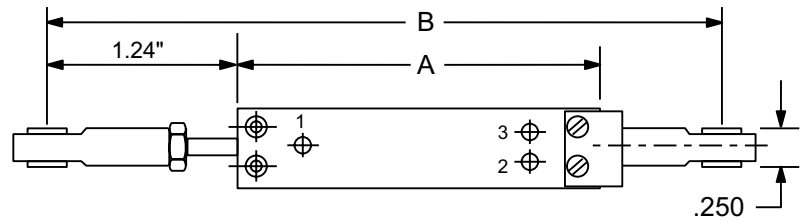
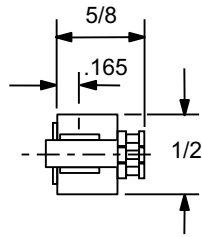
Temperature Range: -30°C to $+105^{\circ}\text{C}$

Temperature Coefficient: ± 400 PPM/ $^{\circ}\text{C}$

LCP12Y Conductive Plastic Linear Potentiometer with Spherical Ball Bearings

DIMENSIONS

	A	B
LCP12Y-12	1.50	3.62
LCP12Y-25	2.00	4.12
LCP12Y-50	3.00	5.12
LCP12Y-100	5.00	7.12



Ordering Information

Example Part Number: **LCP12Y-P-25-10K**

LCP12Y	25	10K	SB
Model	Stroke Length	Resistance	Options
LCP12Y	12 = 12mm 25 = 25mm 50 = 50mm 100 = 100mm	500 = 500 ohms 1K = 1K ohms 2K = 2K ohms 5K = 5K ohms 10K = 10K ohms 20K = 20K ohms	SS = O-Ring Shaft Seal SB = Sealed Body

For more information about this product, visit our website at: www.potentiometers.com

