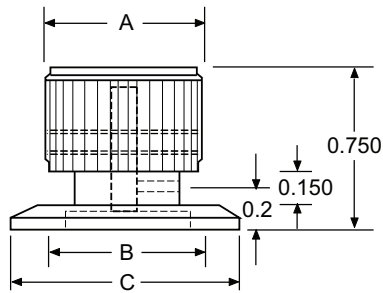
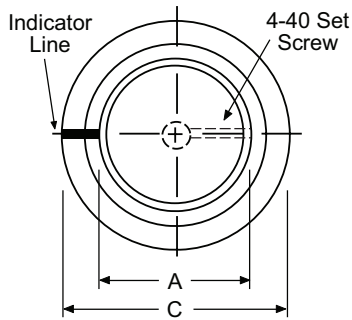


DDSPT Series

This distinctively engineered knob eliminates revolution due to incidental contact. The knob must be depressed before rotation can occur.

Saw cut indicator line located on skirt. Single 4-40 set screw



DDSPT-75 - Black



DDSPT-75 - Clear

DDSPT Series - How to Order

Part Number Example: **DDSPT-75-1-5**

DDSPT	75	1	5
	Dimensions (inches)	Color	Shaft
	A B C	1 = Clear Gloss	5 = .250"
	75 = .750 .590 1.113	2 = Black Gloss	6 = .125"
		3 = Clear Matte	6mm = 6mm
		4 = Black Matte	