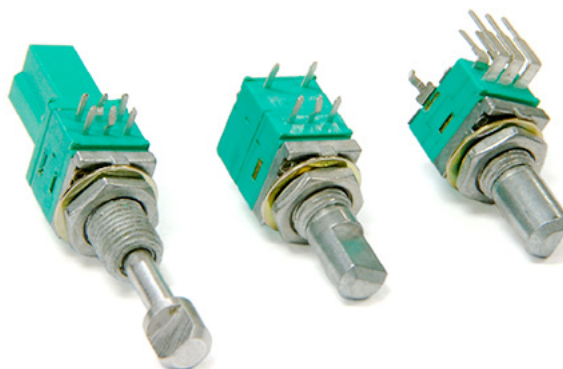


MODEL P09x
9mm Rotary Potentiometer
Multi – Ganged
Conductive Plastic Element
100,000 Cycle Life
Metal shaft / Bushing
Switch / Push-Lock Option
RoHS Compliant
Concentric Shaft Option
Center Tap Option



For more information about this product, visit our website at:
www.potentiometers.com

Model Styles

Side Adjust, PCB pins, up to 8 gangs	P09xN
Side Adjust, PCB pins, up to 8 gangs, with Switch	P09xS
Top Adjust, PCB pins, up to 2 gangs	P09x5N
Side Adjust, PCB pins, up to 2 gangs, with Push-Lock	P09xP
Side Adjust, PCB pins, up to 8 gangs, with Concentric Shaft	P09xC
Side Adjust, PCB pins, up to 8 gangs, with Center Tap	P09xT

Electrical Specifications

Resistance Range, Ohms	1K-500K
Standard Resistance Tolerance	± 20%
Residual Resistance	20 ohms max.
Input Voltage, maximum	50 Vac max.
Power rating, Watts	Taper B: 0.05W; Other Tapers: .025W
Dielectric Strength	300Vac, 1 minute
Insulation Resistance, Minimum	100M ohms at 250Vdc
Sliding Noise	100mV max.
Gang Error (Multi-ganged)	-40dB – 0dB, ±3dB
Actual Electrical Travel, Nominal	260°
Switch Contact Resistance	< 100 milliohms
Switch Power Rated	3.0A at 16Vdc

Mechanical Specifications

Total Mechanical Travel	300°± 10°
Static Stop Strength	50 oz-in
Rotational Torque	0.5 to 1.25 oz-in
Switch Rotational Angle, Maximum	50°

Specifications subject to change without notice.

MODEL P09x

Environmental Specifications

Operating Temperature Range	-40°C to +85°C
Rotational Life	100,000 cycles

Ordering Information

P09 x N - F C 20 B R100K

Model Series

Number of gangs

Style

Shaft Type

Full CCW Shaft Position: see below

Total Resistance

Tapers
A = Audio
B = Linear
C = Reverse Audio

Shaft Length "L" see below

Shaft Types (P09xN, P09xS, P09x5N)

E-TYPE					F-TYPE					Q-TYPE				
L	15	20	25	30	L	15	20	25	30	L	15	20	25	30
					T	7	12	12	12	T	6	12	12	12

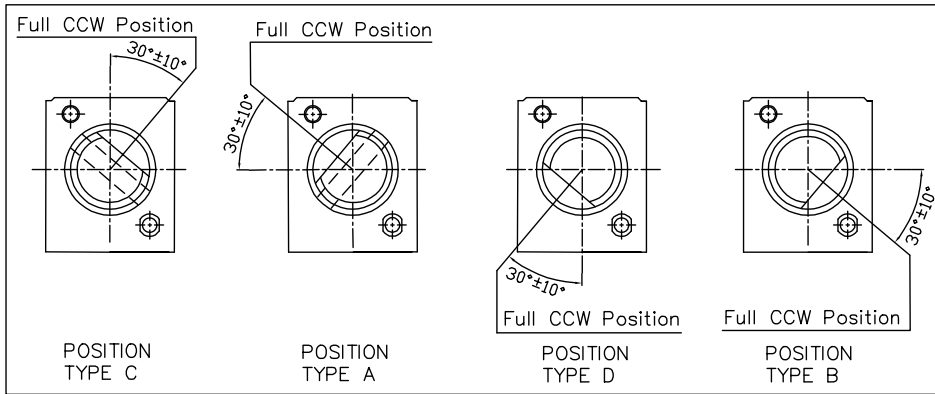
Shaft Types for Push-Lock (P09xP)

E-TYPE					F-TYPE					Q-TYPE						
L	25	30	35		L	25	30	35		L	25	30	35			
				M					M					M		
				5.7	10.7	15.7			5.7	10.7	15.7			5.7	10.7	15.7

MODEL P09x

Shaft Position (F-Type Shaft)

Dashed lines on Type "C" and Type "A" shows position of adjustment slot for E-Type and Q-Type shafts

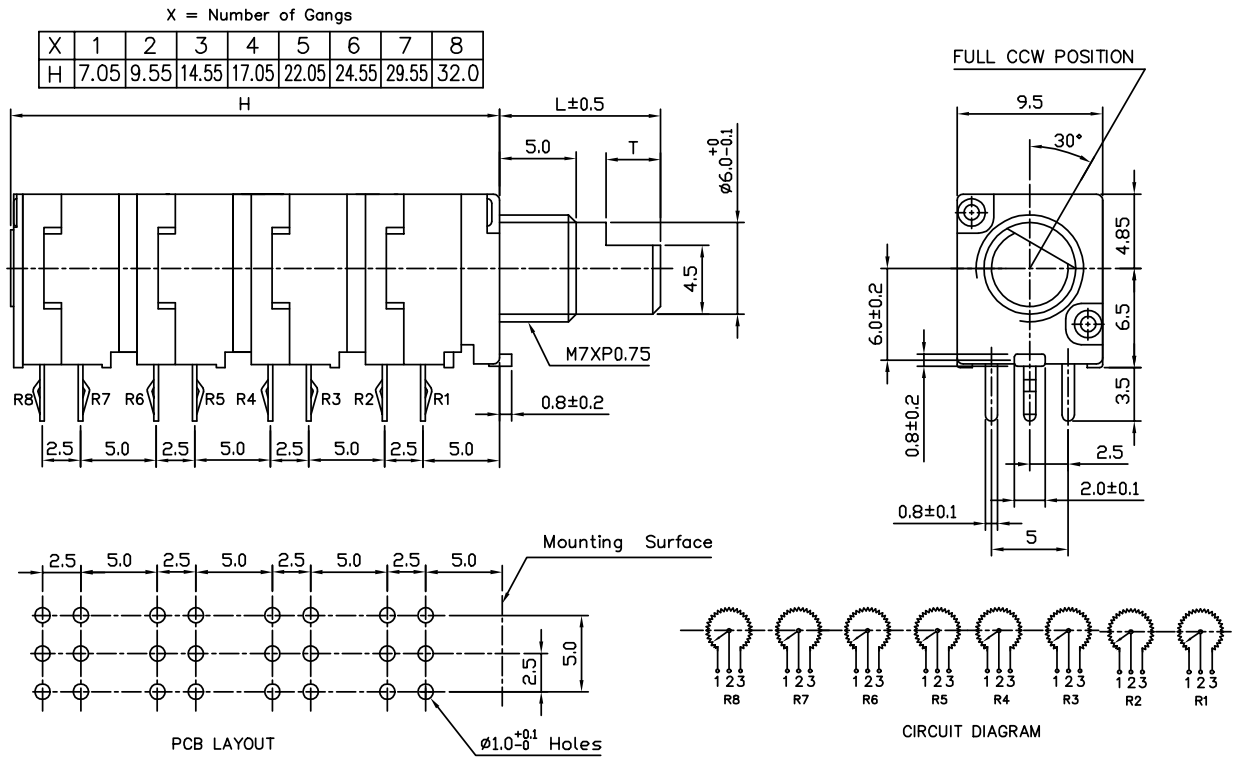


Standard Resistance Values, Ohms

1K 2K 5K 10K 20K 50K 100K 200K 500K

Outline Dimensions (Inch/mm)

Model P09xN (Side Adjust, PCB pins, up to 8 gangs)

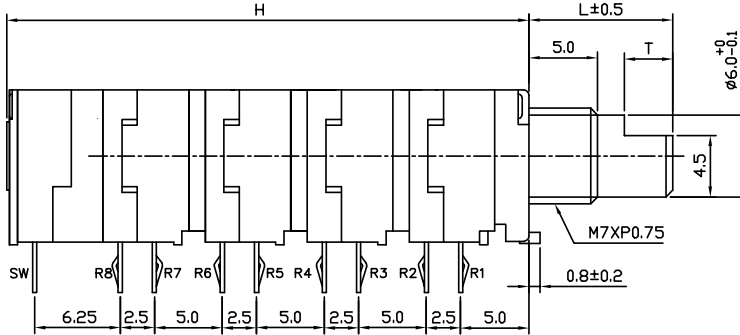


MODEL P09x

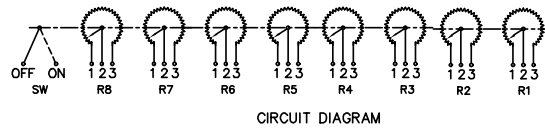
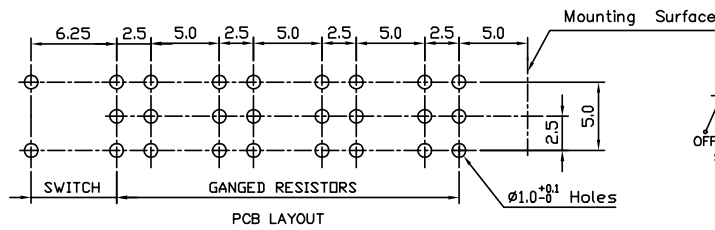
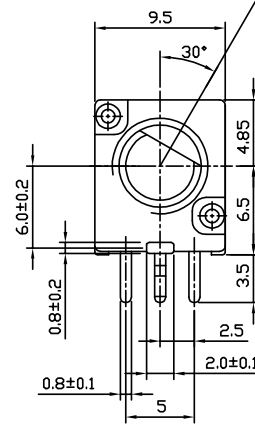
Model P09xS (Side Adjust, PCB pins, up to 8 gangs, with Switch)

X = Number of Gangs + 1 Switch

X	1	2	3	4	5	6	7	8
H	13.3	15.8	20.8	23.3	28.3	30.8	35.8	38.25



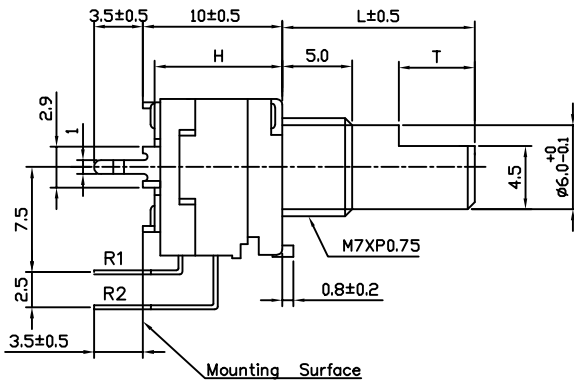
FULL CCW POSITION



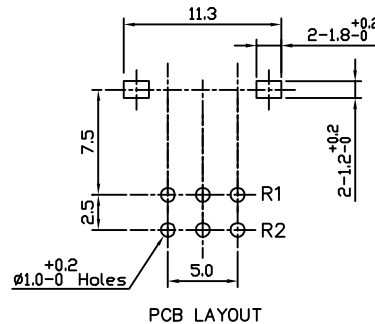
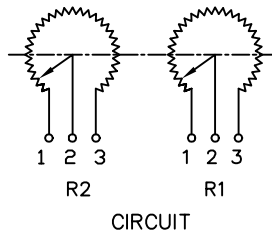
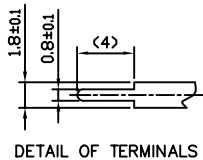
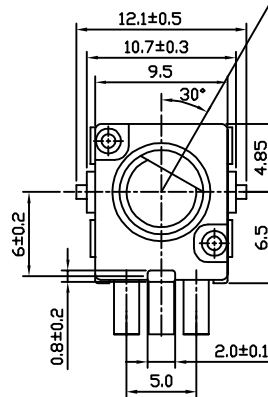
Model P09x5N (Top Adjust, PCB pins, up to 2 gangs)

X = Number of Gangs

X	1	2
H	7.45	9.15



FULL CCW POSITION

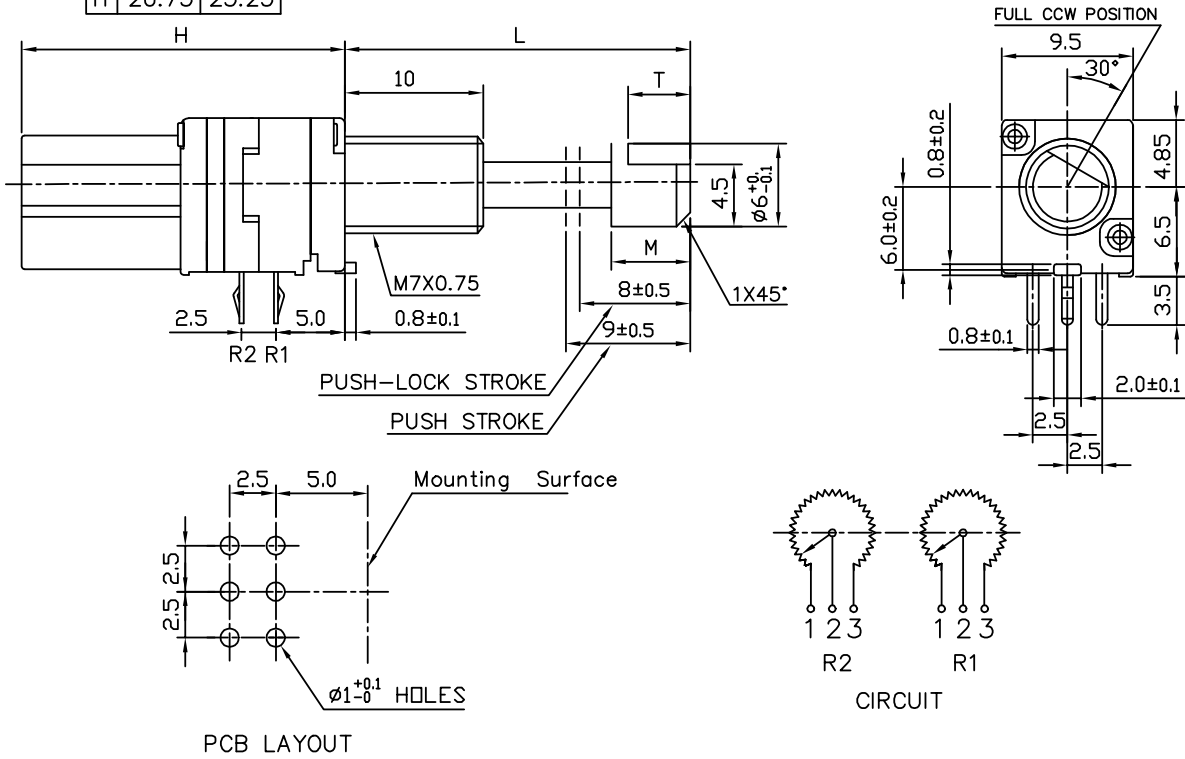


MODEL P09x

Model P09xP (Side Adjust, PCB pins, with Push-Lock, up to 2 gangs)

X = Number of Gangs

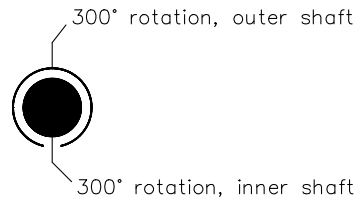
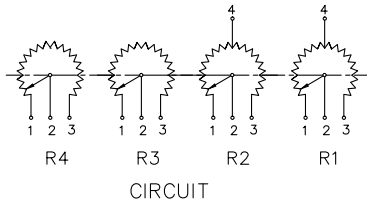
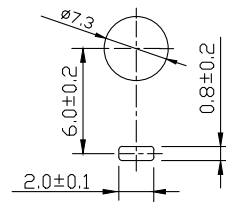
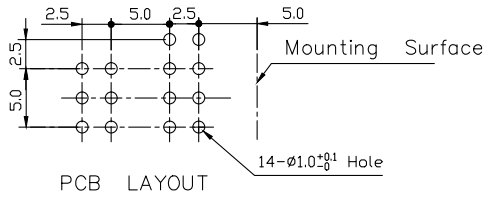
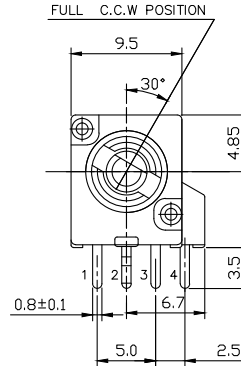
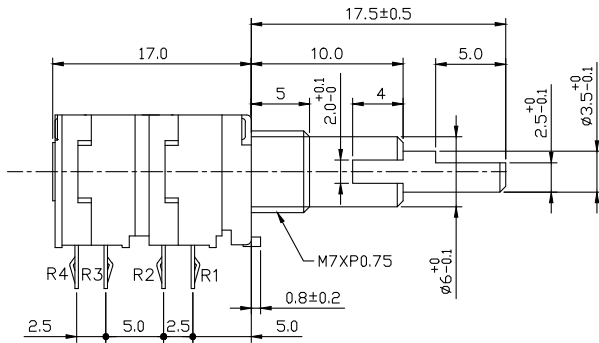
X	1	2
H	20.75	23.25



MODEL P09x

Model P09xC and P09xT (PCB pins with Concentric Shaft and Center Tap Options)

This Diagram shows both options
Please consult your Sales Representative for details



Taper Curves

