

Series PSL
 Slide Potentiometer
 Molded Element
 100,000 Cycle Life
 Metal or Plastic Shaft Options
 With/Without LED Illumination
 With/Without Dust Cover
 RoHS Compliant



MODEL STYLE

| | |
|----------------------|-------|
| Single Gang With LED | PSxxL |
|----------------------|-------|

ELECTRICAL¹

| | |
|---|---|
| Resistance Range, Ohms | 500 -1M |
| Standard Resistance Tolerance | ± 20% |
| Resistance Tapers | A,B,C |
| Residual Resistance | Terminals 1 to 2:Less than 10 ohms Terminals 2 to 3:Less than 30 ohms |
| Input Voltage, Maximum | Linear B taper: 200 Vac Other tapers: 150 Vac |
| Power rating, Watts (Single Unit / Dual Unit) | Linear B taper: 20mm: 0.1W / 0.05W, 30mm: 0.2W / 0.1W 45mm: 0.25W / 0.125W, 60mm:0.2W / 0.2W Other tapers: 20mm: 0.05W / 0.025W, 30mm: 0.1W / 0.05W 45mm: 0.125W / 0.06W, 60mm:0.1W / 0.1W |
| Dielectric Strength | 300Vac, 1 minute |
| Insulation Resistance, Minimum | 10M ohms at 250Vdc/ 1 minute |
| Sliding Noise | Less than 100mV |
| Gang Error | ±3dB (-40dB to 0dB) |

MECHANICAL

| | |
|-------------------------------|---------------|
| Static Stop Strength, Minimum | 5.0 Kgf/cm |
| Operating Force | 10gf to 100gf |
| Detent Slip-out force | 30gf to 200gf |

DURABILITY

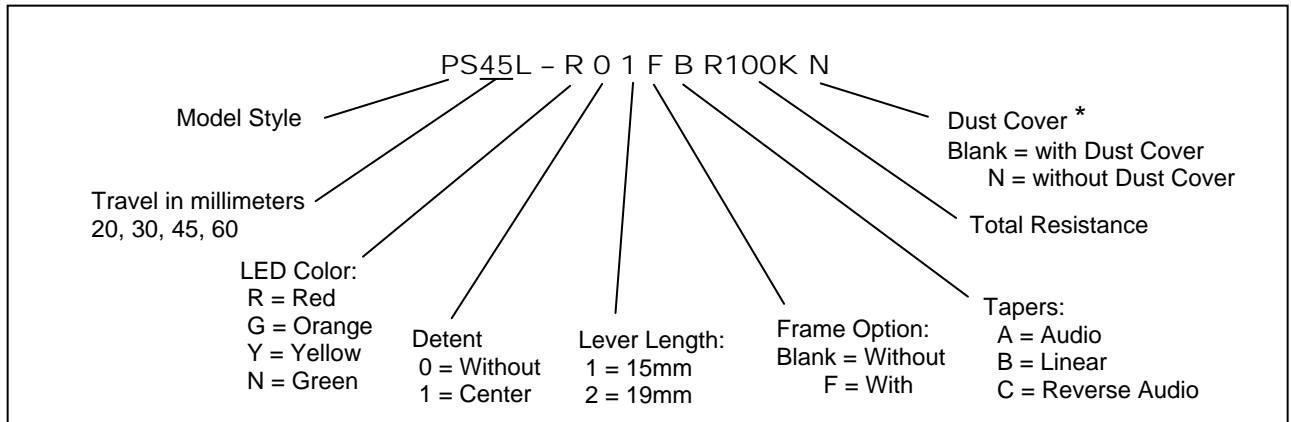
| | |
|--------------|----------------|
| Sliding Life | 100,000 cycles |
|--------------|----------------|

¹ Specifications subject to change without notice.

Series PSL

ORDERING INFORMATION²

Model PSL

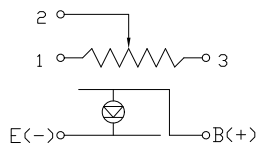


STANDARD RESISTANCE VALUES, OHMS

| | | | | | | | | | | |
|-----|----|----|----|-----|-----|-----|------|------|------|-------|
| 500 | 1K | 2K | 5K | 10K | 20K | 50K | 100K | 200K | 500K | 1 MEG |
|-----|----|----|----|-----|-----|-----|------|------|------|-------|

CIRCUIT DIAGRAM

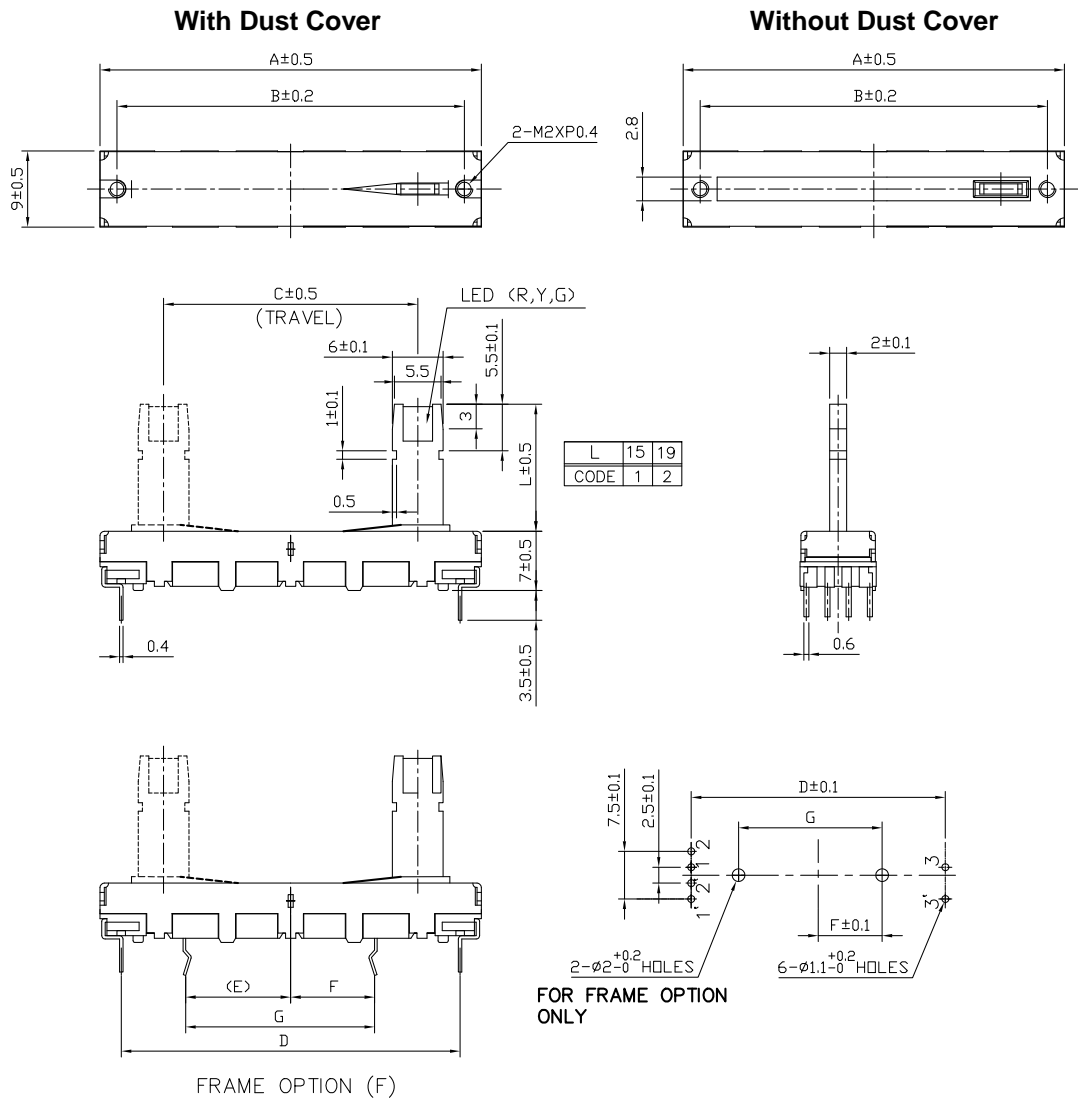
PSL (Single gang with LED)



² Contact our customer service for custom designs and features.

Series PSL

OUTLINE DRAWING



PSL Dimensions:

| MODEL | A | B | C | D | F | G |
|-------|----|----|----|----|------|------|
| PS20M | 35 | 31 | 20 | 30 | 5 | 12.5 |
| PS30M | 45 | 41 | 30 | 40 | 10 | 22.5 |
| PS45M | 60 | 56 | 45 | 55 | 15 | 32.5 |
| PS60M | 75 | 71 | 60 | 70 | 22.5 | 47.5 |