

MODEL PS100
Slide Potentiometer
Single / Dual Gang
100 mm Travel
100,000 Cycle Life
Metal Shaft
RoHS Compliant



For more information about this product, visit our website at:
www.potentiometers.com

Model Styles

Single Gang , 100mm Travel	PS100 -1
Dual Gang , 100mm Travel	PS100 -2

Electrical Specifications

Resistance Range, Ohms	500 -1M
Standard Resistance Tolerance	± 20%
Resistance Tapers	A,B,C
Residual Resistance, Max.	Term. 1-2 : 10 ohms, Term 2-3: 30 ohms
Input Voltage, Maximum	200Vdc
Power rating, Watts	Linear B taper: 0.25W Other tapers: 0.125W
Dielectric Strength	300Vac, 1 minute
Insulation Resistance, Minimum	100M ohms at 250Vdc/ 1 minute
Sliding Noise	Less than 100mV
Gang Error	±3dB (-40dB to 0dB)

Mechanical Specifications

Static Stop Strength, Minimum	10.0 Kgf-cm
Operating Force	30gf max.

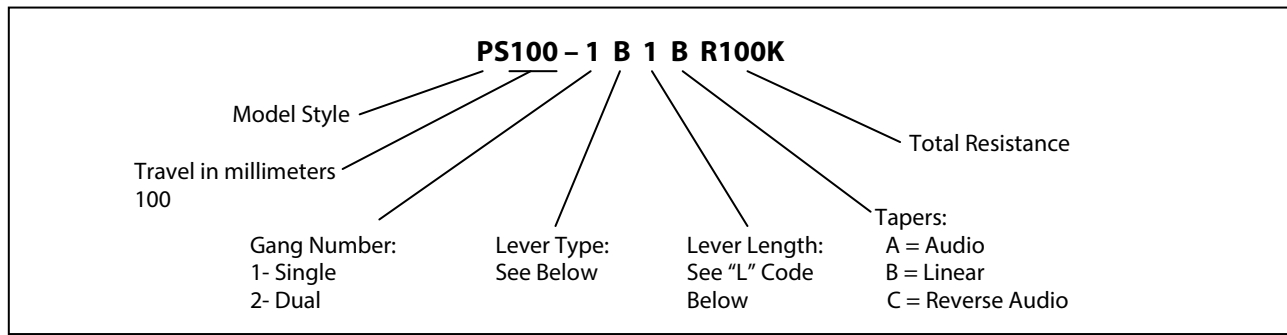
Durability

Sliding Life	100,000 cycles
--------------	----------------

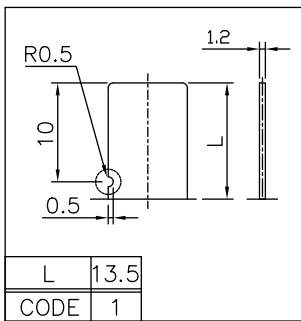
Specifications subject to change without notice.

MODEL PS100

Ordering Information



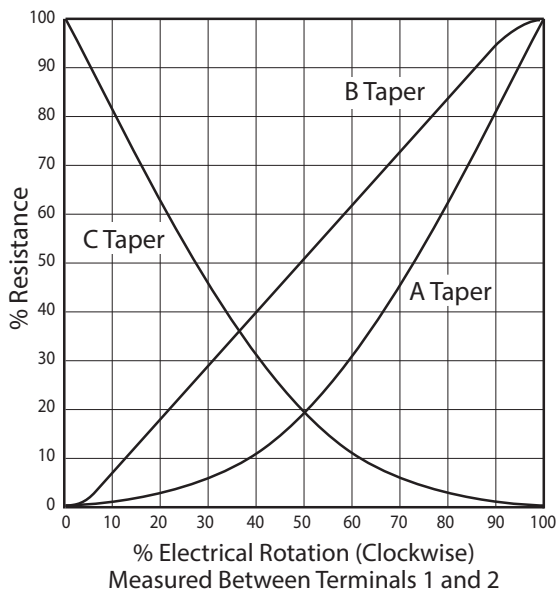
B - Type Lever



Standard Resistance Values, Ohms

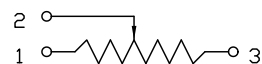
500 1K 2K 5K 10K 20K 50K 100K 200K 500K 1MEG

Taper Curves

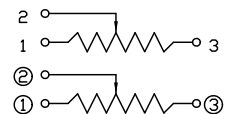


Circuit Diagram

PS100-1 Single Gang



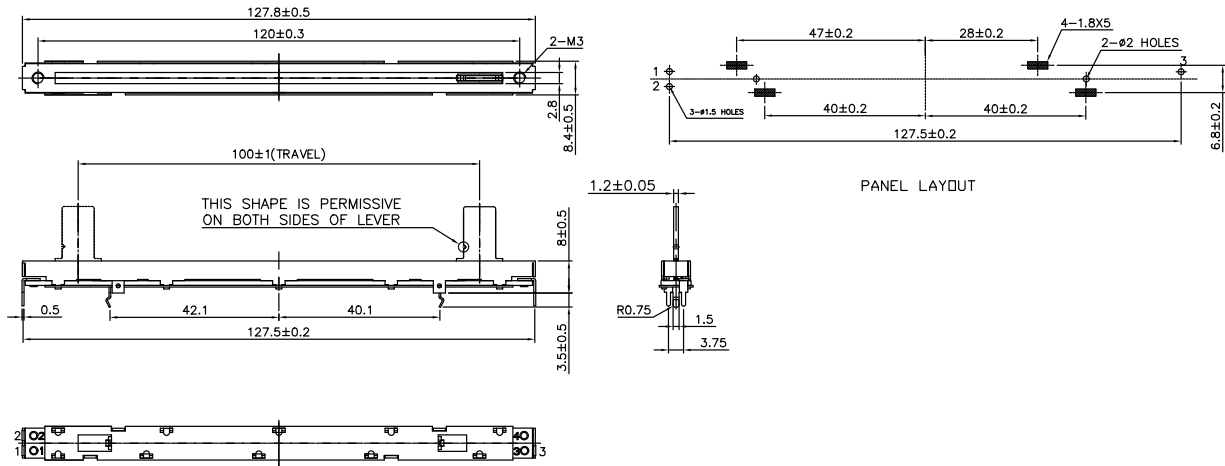
PS100-2 Dual Gang



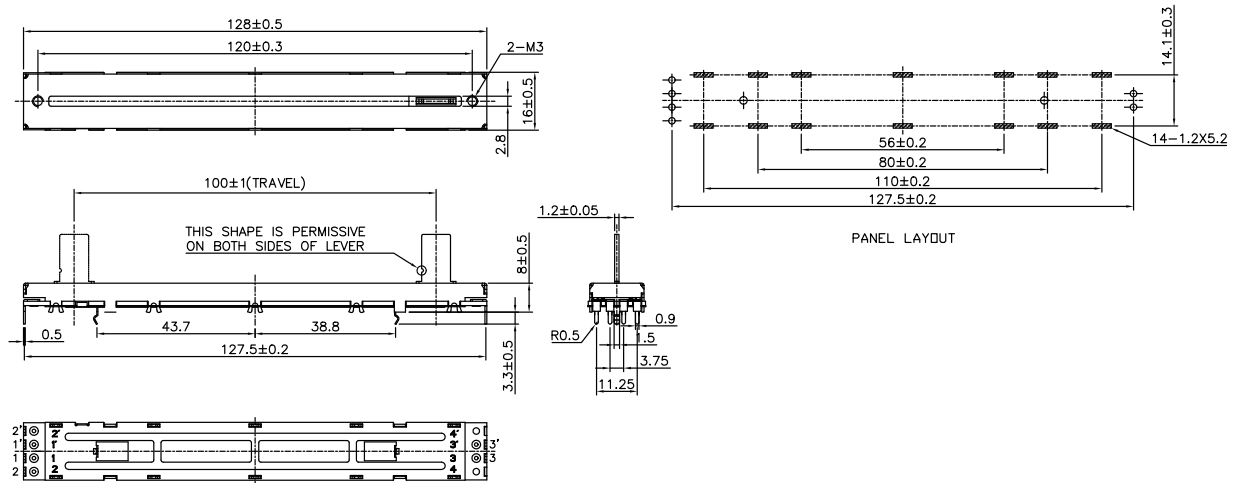
MODEL PS100

Outline Drawing

PS100-1 Single Gang



PS100-2 Dual Gang



For more information about this product,
 visit our website at:
www.potentiometers.com

